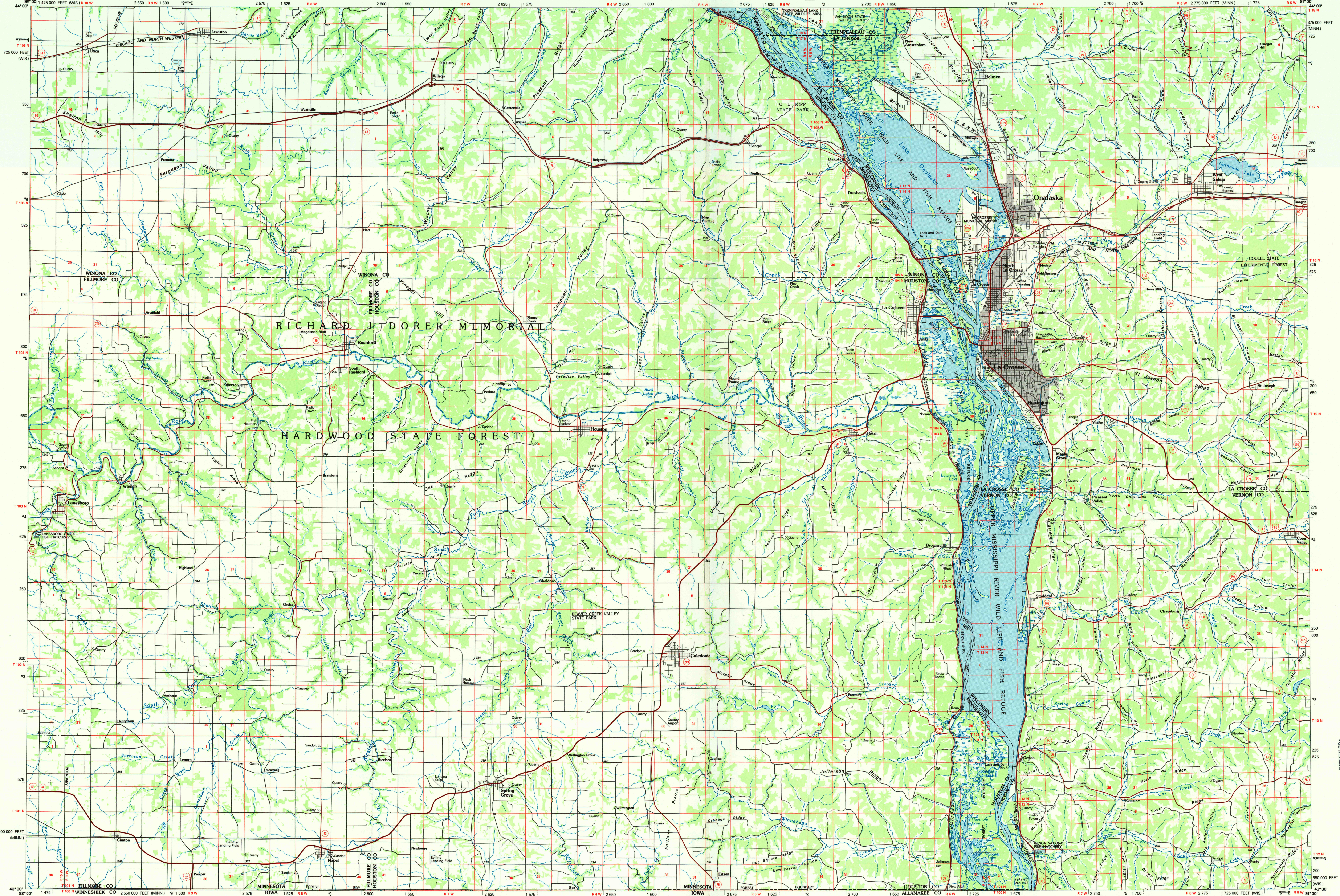
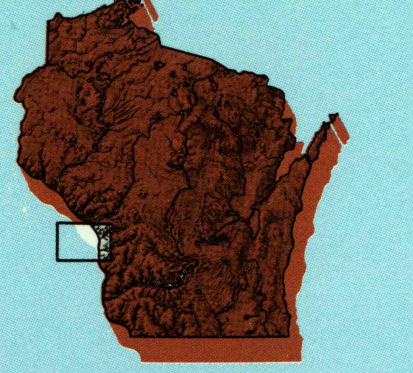


LA CROSSE, WISCONSIN-MINNESOTA-IOWA

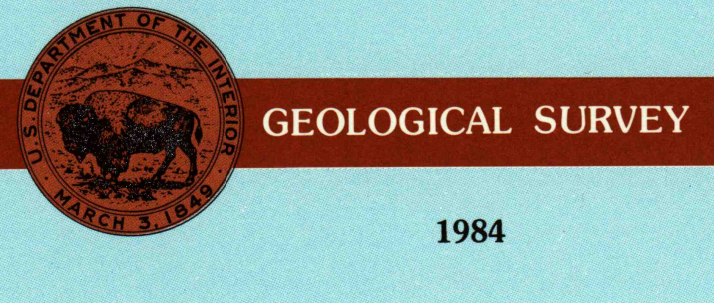
30 X 60 MINUTE SERIES (PLANIMETRIC)



La Crosse WISCONSIN-MINNESOTA-IOWA 1:100 000-scale planimetric map



- 30 X 60 MINUTE QUADRANGLE SHOWING
- Elevations in meters
 - Highways, roads and other manmade structures
 - Water features
 - Woodland areas
 - Geographic names



Produced by the United States Geological Survey
 Compiled from USGS 1:24 000-scale topographic maps dated 1963-1983. Planimetry revised from aerial photographs taken 1963-83 and other source data. Revised information not field checked. Map edited 1984.
 Projection and 10 000-meter grid, zone 15, Universal Transverse Mercator
 25 000-foot grid ticks based on Minnesota coordinate system, south zone and Wisconsin coordinate system, south zone 1927 North American Datum
 To place on the predicted North American Datum 1983, move the projection lines 7 meters north and 13 meters east
 There may be private inholdings within the boundaries of the National or State reservations shown on this map

NATIONAL GEODETIC VERTICAL DATUM OF 1929
 ELEVATIONS SHOWN TO THE NEAREST METER

THIS MAP COMPLIES WITH NATIONAL MAP ACCURACY STANDARDS

CONVERSION TABLE		DECLINATION DIAGRAM		ADJOINING MAPS		
Meters	Feet	1° 30' 18" N		1	2	3
1	3.2808	18 MILS		4	5	6
2	6.5616	UTM grid convergence (EN) and 1984 magnetic declination (MN) at center of map		7	8	
3	9.8424	Diagram is approximate		1 Rochester	2 Winona	3 Black River Falls
4	13.1232			4 Austin	5 Sparta	6 Charles City
5	16.4040			7 Decorah	8 Richland Center	
6	19.6848					
7	22.9656					
8	26.2464					
9	29.5272					
10	32.8080					

FOR SALE BY U. S. GEOLOGICAL SURVEY, DENVER, COLORADO 80225
 OR RESTON, VIRGINIA 22092

Topographic Map Symbols

- Primary highway, hard surface
- Secondary highway, hard surface
- Light duty road, principal street, hard or improved surface
- Other road or street; trail
- Route marker: Interstate, U.S., State
- Railroad: standard gage, narrow gage
- Bridge: overpass, underpass
- Tunnel: road, railroad
- Built up area: locality, elevation
- Airport: landing field, landing strip
- National boundary
- State boundary
- County boundary
- National or State reservation boundary
- Land grant boundary
- U.S. public lands survey: range, township, section
- Range, township, section line: projected
- Power transmission line; pipeline
- Dam; dam with lock
- Cemetery; building
- Well; water well; spring
- Mine shaft; adit or cave; mine, quarry; gravel pit
- Campground; picnic area; U.S. location monument
- Ruins; cliff dwelling
- Distorted surface: strip mine, lava, sand
- Contours: index, intermediate, supplementary
- Bathymetric contours: index, intermediate
- Stream, lake, perennial; intermittent
- Rapids, large and small; falls, large and small
- Area to be submerged; marsh, swamp
- Land subject to controlled inundation; woodland
- Scrub; mangrove
- Orchard; vineyard

A pamphlet describing topographic maps is available on request

SCALE 1:100 000

LA CROSSE, WISCONSIN-MINNESOTA-IOWA 43091-E1-PL-100