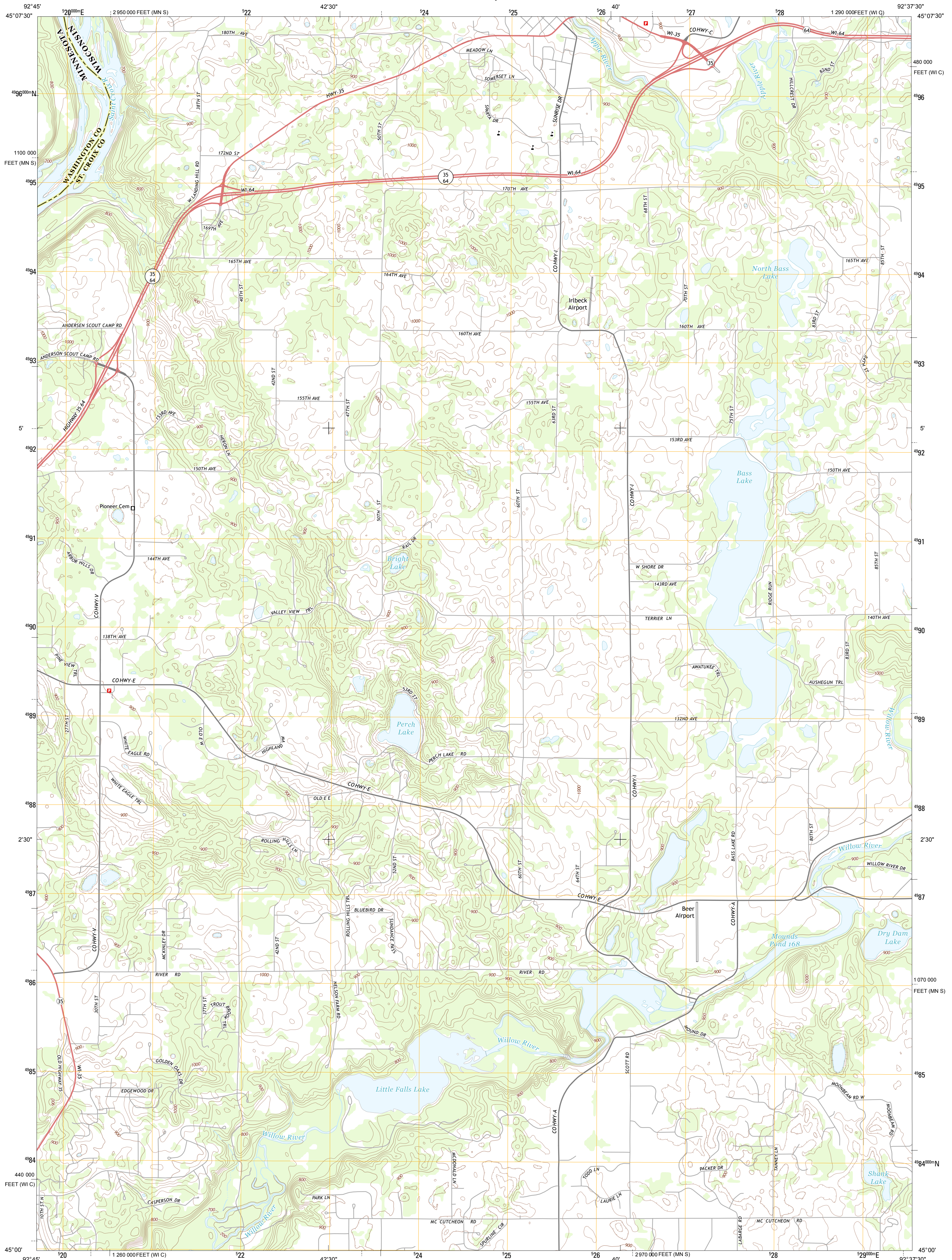




U.S. DEPARTMENT OF THE INTERIOR
U. S. GEOLOGICAL SURVEY

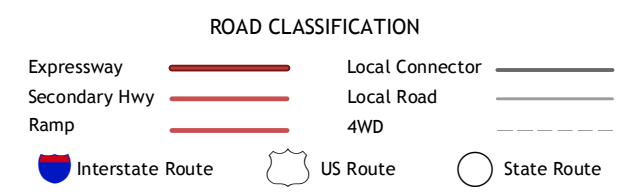
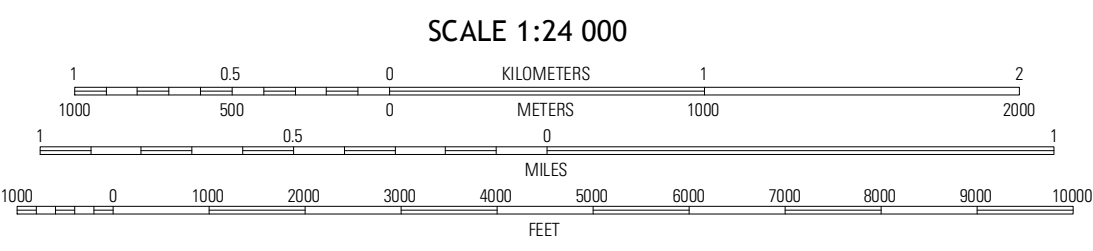
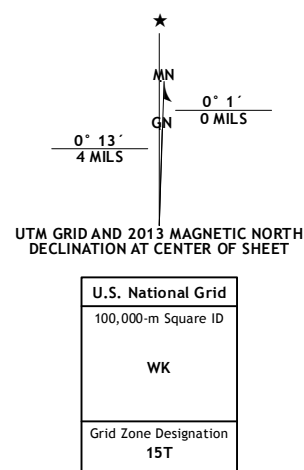


SOMERSET SOUTH QUADRANGLE
WISCONSIN-MINNESOTA
7.5-MINUTE SERIES



Produced by the United States Geological Survey
North American Datum of 1983 (NAD83)
World Geodetic System of 1984 (WGS84). Projection and
1:000-meter grid: Universal Transverse Mercator, Zone 15T
10 000-foot ticks: Wisconsin Coordinate System of 1983 (central
zone), Minnesota Coordinate System of 1983 (south zone)

Imagery.....N.A.I.P., August 2010
Roads.....©2006-2012 TomTom
Names.....G.N.S., 2013
Hydrography.....National Hydrography Dataset, 2010
Contours.....National Elevation Dataset, 2002
Boundaries.....Census, IBWC, IBC, USGS, 1972 - 2012



QUADRANGLE LOCATION

Marion on St. Croix	Somerset North	New Richmond North
Stillwater	Somerset South	New Richmond South
Hudson	Northline	Roberts

ADJOINING 7.5 QUADRANGLES

SOMERSET SOUTH, WI-MN
2013

CONTOUR INTERVAL 20 FEET
NORTH AMERICAN VERTICAL DATUM OF 1988

This map was produced to conform with the
National Geospatial Program US Topo Product Standard, 2011.
A metadata file associated with this product is draft version 0.6.12