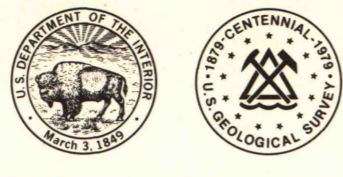
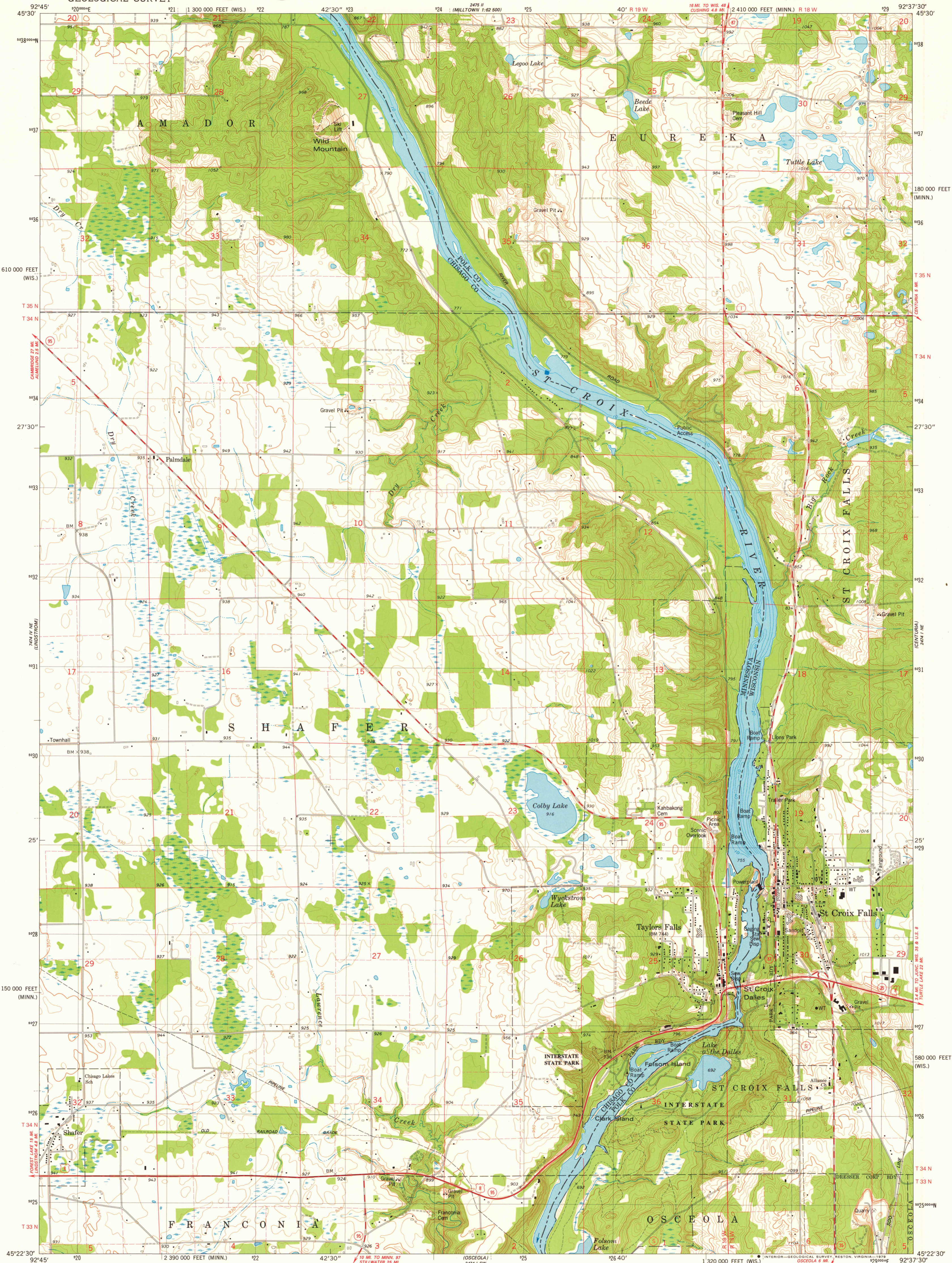


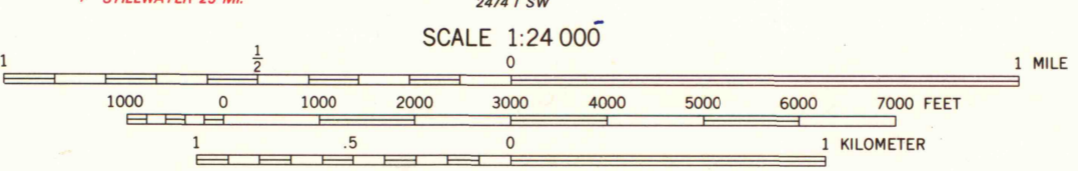
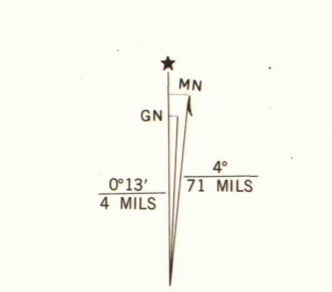
UNITED STATES
DEPARTMENT OF THE INTERIOR
GEOLOGICAL SURVEY



ST. CROIX DALLES QUADRANGLE
WISCONSIN-MINNESOTA
7.5 MINUTE SERIES (TOPOGRAPHIC)
NW/4 ST. CROIX DALLES 15' QUADRANGLE



Mapped, edited, and published by the Geological Survey in cooperation with the Wisconsin Division of Highways and Wisconsin Geological and Natural History Survey
Control by USGS and NOS/NOAA
Topography by photogrammetric methods from aerial photographs taken 1975. Field checked 1976. Map edited 1978
Hydrography compiled from information furnished by Wisconsin Department of Natural Resources
Projection: Minnesota coordinate system, central zone (Lambert conformal conic)
10,000-foot grid ticks based on Minnesota coordinate system, central zone and Wisconsin coordinate system central zone
1000-meter Universal Transverse Mercator grid, zone 15 1927 North American datum
Fine red dashed lines indicate selected fence and field lines where generally visible on aerial photographs. This information is unchecked



THIS MAP COMPLIES WITH NATIONAL MAP ACCURACY STANDARDS FOR SALE BY U. S. GEOLOGICAL SURVEY, RESTON, VIRGINIA 22092 AND WISCONSIN GEOLOGICAL AND NATURAL HISTORY SURVEY, MADISON, WISCONSIN 53706 A FOLDER DESCRIBING TOPOGRAPHIC MAPS AND SYMBOLS IS AVAILABLE ON REQUEST



ROAD CLASSIFICATION
Primary highway, hard surface — Light-duty road, hard or improved surface
Secondary highway, hard surface — Unimproved road
Interstate Route — U. S. Route — State Route

ST. CROIX DALLES (WIS.)-MINN.
NW/4 ST. CROIX DALLES 15' QUADRANGLE
N4522.5-W9237.5/7.5

1978
AMS 7474 1 NW-SERIES V872

MAP AND AIR PHOTO LIBRARY

SEP 17 1979

University of Wisconsin
Madison

1978
Copy
-1-